

Construction of Next-generation Social Information Infrastructure in the Years of Digital Convergence

<Program for Fostering Regional Innovation (Global Type) >

Project Team

Project Manager

Kiyotaka Fujisaki
(Associate Professor, Graduate School of Information Science and Electrical Engineering, Kyushu University)

Researchers

Koji Ishida (Associate Professor, System LSI Research Center, Kyushu University)
Sozo Inoue (Associate Professor, Kyushu University Library)
Yoshihiro Okada (Associate Professor, Graduate School of Information Science and Electrical Engineering, Kyushu University)
Shigeru Takano (Assistant Professor, Graduate School of Information Science and Electrical Engineering, Kyushu University)
Kensuke Baba (Assistant Professor, Graduate School of Information Science and Electrical Engineering, Kyushu University)
Kohei Watanabe (Researcher, Fukuoka Industry, Science & Technology Foundation)

Enterprises

THE BANK OF FUKUOKA, LTD./Fukuoka Broadcasting Corporation/Television Nishinippon Corporation
BEST DENKI CO.,LTD./NIPPON TELEGRAPH AND TELEPHONE WEST CORPORATION

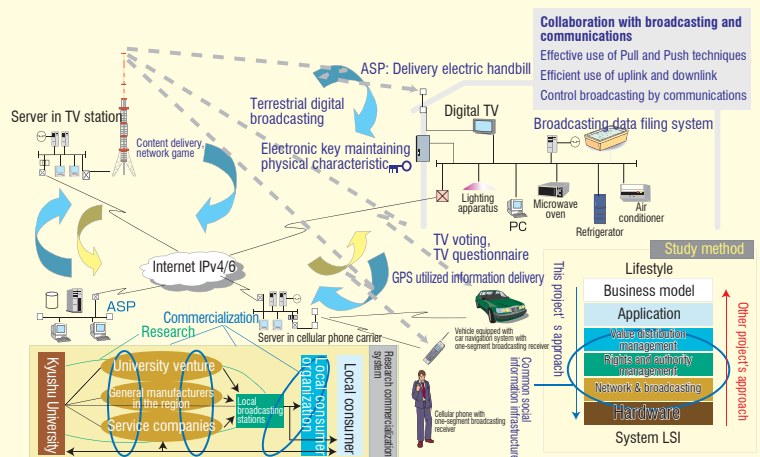
Purpose of the Research

We are going to accomplish the following objects with the aim of constructing a supply base in Fukuoka Prefecture for the next-generation system LSI, its application products, and systems.

- 1) Construct a next-generation network service business model (Public service, general service/service for mobile equipments, service for fixed equipments) in the years of digital convergence.
- 2) Construct a next-generation common social information infrastructure prototype which is required in the business model written above (Management of common rights and authority, security, value distribution, incorporation of authentication as a feature).
- 3) Development of software and equipments which work in connection with the common information infrastructure (Some of them shall be developed as far as designing or trial manufacturing and others shall be developed as far as prototyping).
- 4) Establishment and enforcement of the requirements specification for the device semiconductors which will be the components of a system or equipment.

Summary of the Research

This research and development aims to create a requirements specification for the next-generation system LSI which is acceptable to the society and its prototype through the construction of a social information infrastructure in a broadcasting and communication integration network environment which utilizes a technology developed by Kyushu University to manage rights and authority safely, securely, and flexibly, along with the research, development, and practical application of new business models, equipments which support the new business models, and software based on that infrastructure. And it also aims to establish technology accumulation bases for each application.

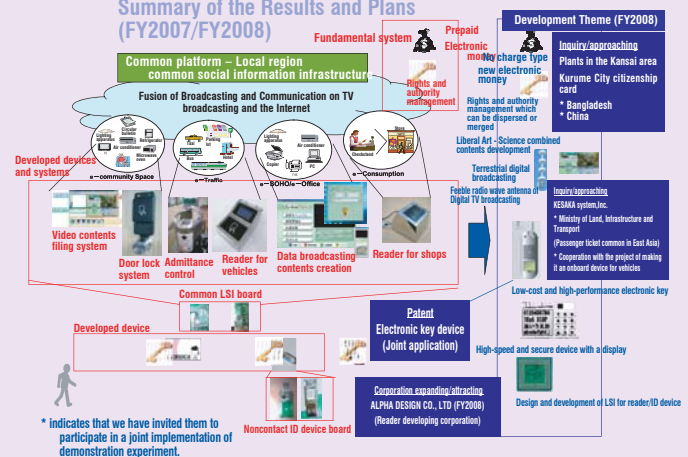


Results of the Research and Future Plans

Results of the research (Prototype)

- Hardware
 - 3-mode IC card reader for ticket examiner, shopping and vehicle
 - Door lock system (Electronic lock with a reader)
- Software
 - Video contents filing system
 - Broadcasting and communication integration contents system
- Mechanism of voucher trading service platform
 - Prepaid electronic cash
 - Rights and authority management

Summary of the Results and Plans (FY2007/FY2008)



Office
System LSI Division
FUKUOKA INDUSTRY, SCIENCE & TECHNOLOGY FOUNDATION
〒814-0001 3-8-33, Momochihama, Sawara-ku, Fukuoka City
Fukuoka Institute of System LSI Design Industry
Information TEL :+81 (92) 832 7155 FAX :+81 (92) 832 1700 <http://www2.lab-ist.jp/>

Cooperative support organization
Knowledge Cluster Division, Industry-Academia Cooperation Department,
Industry-Academia Cooperation Center
Kitakyushu Foundation for the Advancement of Industry, Science and Technology
〒808-0135 2F, Industry-Academia Cooperation Center
Kitakyushu Science and Research Park
2-1, Hibikino, Wakamatsu-ku, Kitakyushu City, Fukuoka
Information TEL :+81 (93) 695 3440 FAX :+81 (93) 695 3439 <http://www.ksrp.or.jp/fa/s/>